

Handy Elephant



You will need:

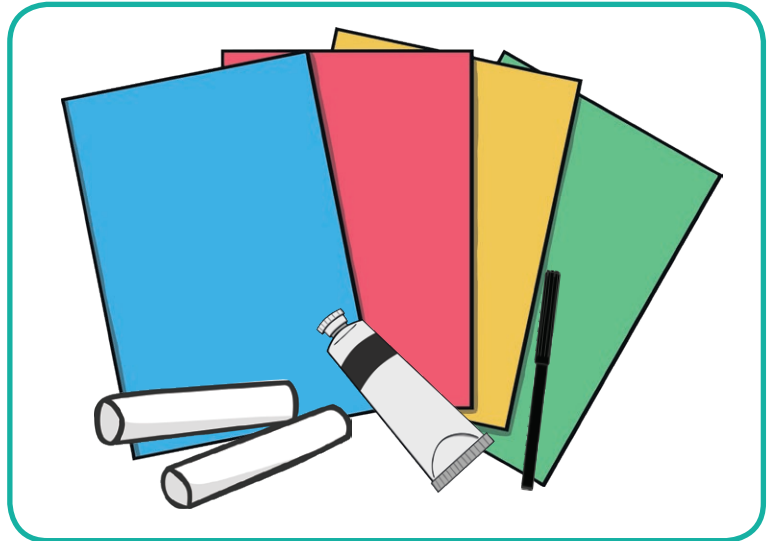
Light and dark grey paint

Black felt-tip pen

White chalk

2 paintbrushes (one for each colour)

Construction paper



Instructions:

1. Spread newspaper over the work area.
2. Paint inside of hand, including fingers and thumb, with light grey paint.
3. With fingers and thumb spread wide, place hand in the middle of construction paper and make a print (fingers pointing down).
4. Dip pad of thumb in dark grey paint and print an ear on the palm print (see illustration).
5. Draw an eye and tail with the black felt-tip pen.
6. Draw a tusk with white chalk.