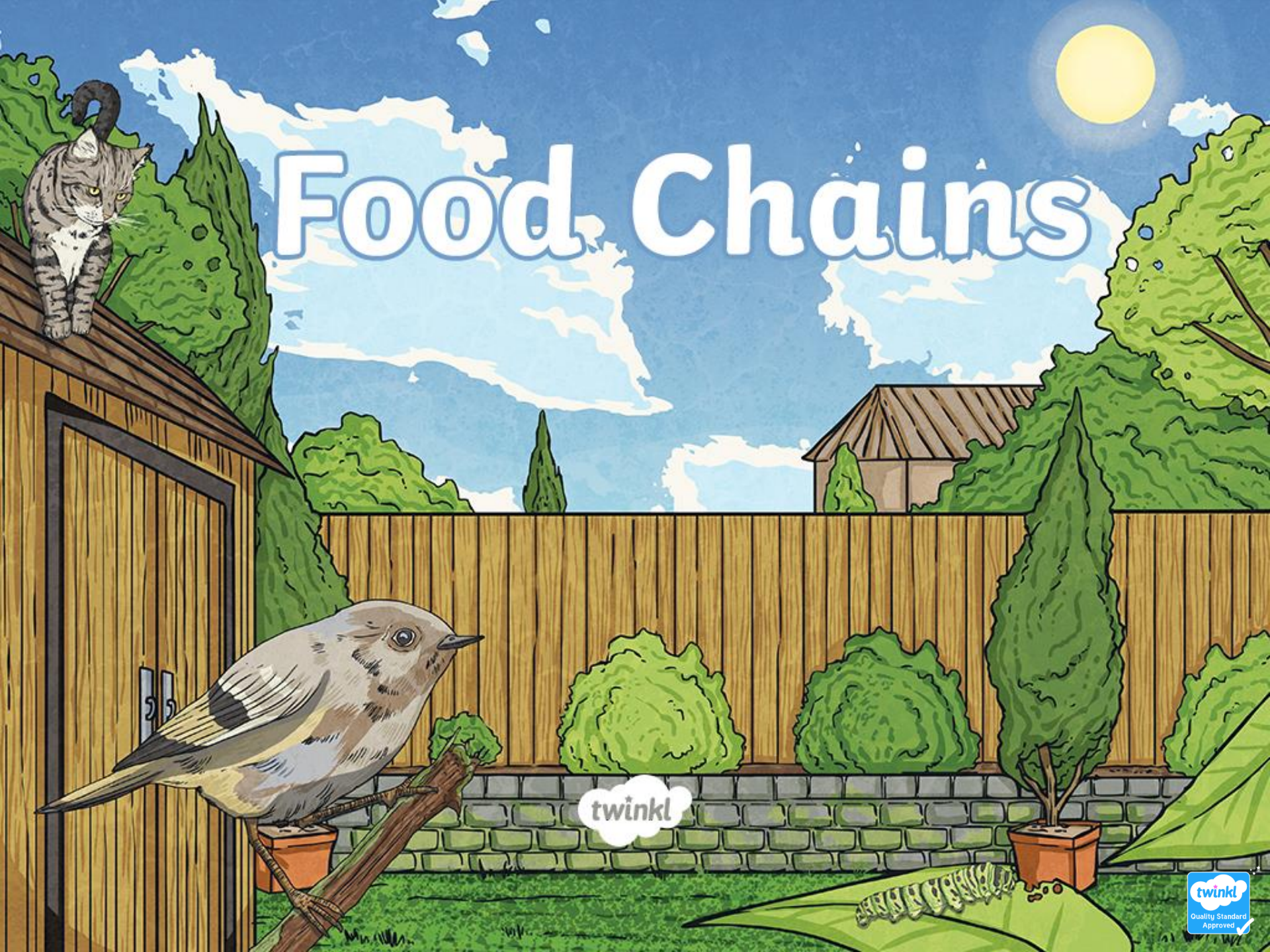


# Food Chains



twinkl

# Key Words

producer



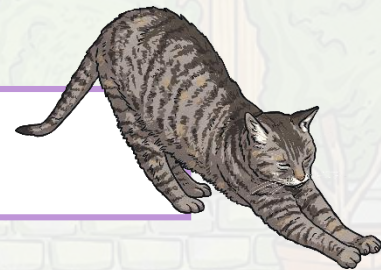
consumer



prey



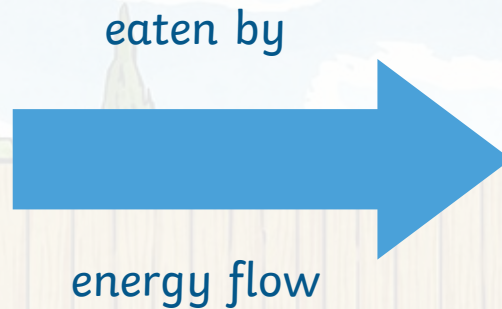
predator



# Food chains

All food chains start with a producer.

Arrows are used in a food chain to show who is eaten by who.

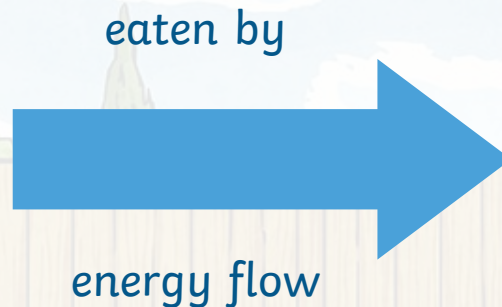


These are usually plants, like grass, leaves and seaweed.

# Food chains

Food chains then have a consumer.

Arrows are used in a food chain to show who is eaten by who.



The first consumer, after the arrow, is the one that eats the producer. These may be smaller creatures. The second consumer is the one that eats the first consumer!

# Consumer or Producer?

**Producers** are plants that make their own food.

**Consumers** are animals that eat food.

Which are **consumers** and which are **producers**?

rabbit

mouse

lion

lettuce

sea otter

# Consumer or Producer?

**Producers** are plants that make their own food.

**Consumers** are animals that eat food.

Which are **consumers** and which are **producers**?

rabbit

mouse

lion

lettuce

sea otter



What do all food chains start with?



What do all food chains start with?

 a producer 



Name a predator and its prey.

Name a predator and its prey.

bear and fish  
fox and rabbit

How many examples did you come up with?

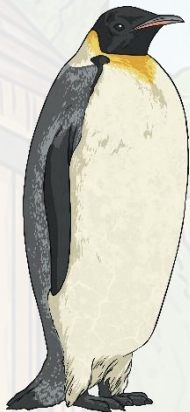




Are penguins the prey of polar bears?



Are penguins the prey of polar bears?

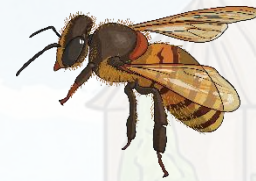


No!  
Penguins live in the  
Antarctic and polar  
bears live in the Arctic.



Give an example of a consumer that makes honey.

Give an example of a consumer that makes honey.



A bee

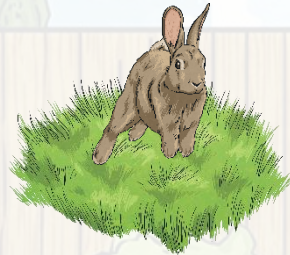


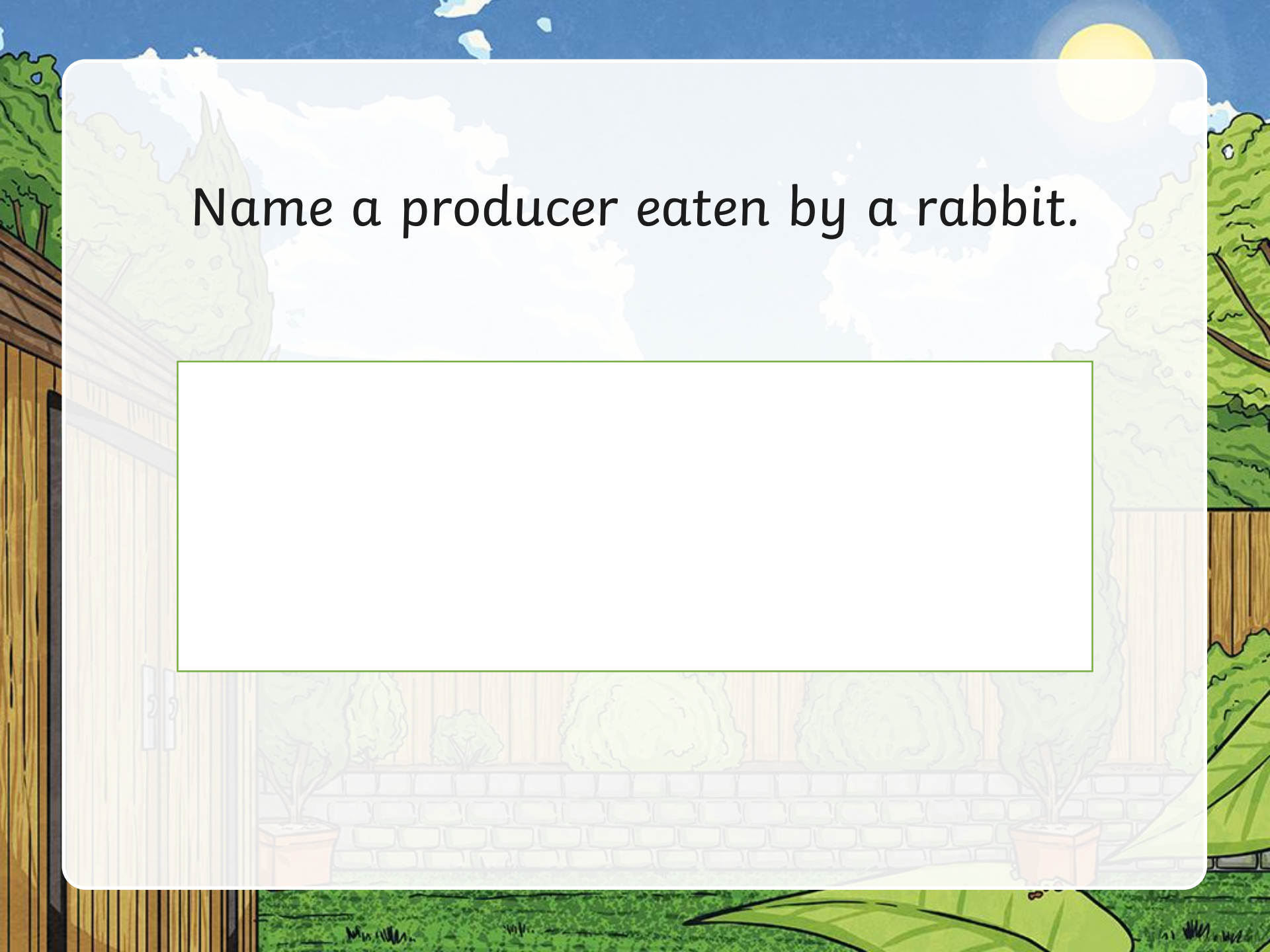
Think of an example of a food chain including a fox.



Think of an example of a food chain including a fox.

grass → rabbit → fox → bear





Name a producer eaten by a rabbit.

Name a producer eaten by a rabbit.



cabbage  
carrot  
grass



Name a consumer.

A cartoon illustration of a garden scene. In the foreground, there is a wooden fence with a stone base. Several potted plants, including tall cypresses and rounded bushes, are placed along the fence. In the background, a house with a brown roof is visible, along with more trees and a bright sun in a blue sky with white clouds. The entire scene is framed by a white rounded rectangle.

Name a consumer.

Any animal!



Name a producer.

A cartoon illustration of a garden scene. In the foreground, there is a wooden fence with a stone base. Several potted plants, including tall cypresses and rounded bushes, are placed along the fence. In the background, a house with a brown roof is visible, along with more trees and a bright sun in a blue sky with white clouds. The entire scene is framed by a white rounded rectangle.

Name a producer.

Any plant!



twinkl