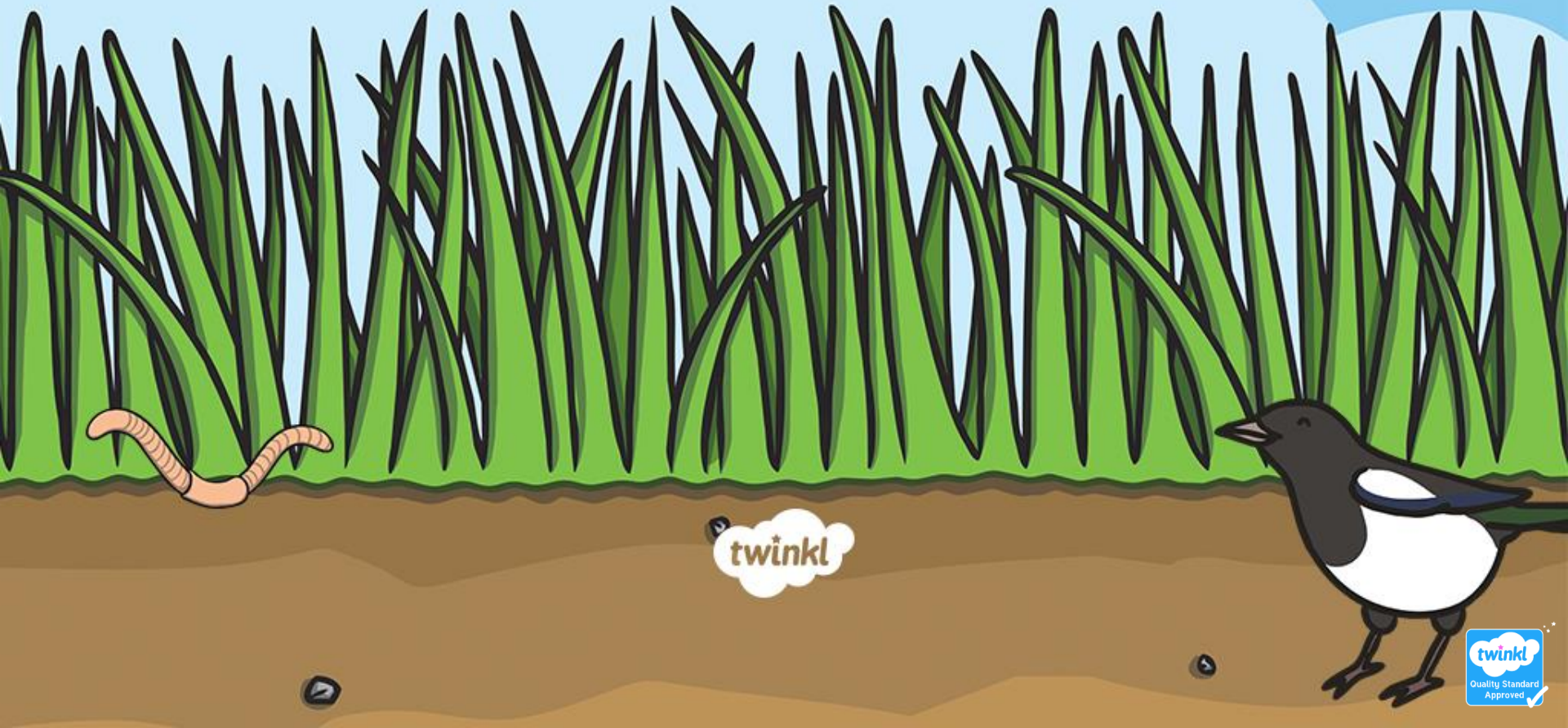


# What Is a Food Chain?



# What Is a Food Chain?

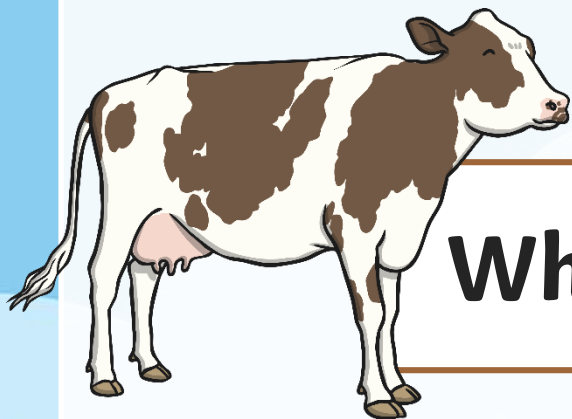
A food chain shows how animals depend on other plants and animals for their food and survival.



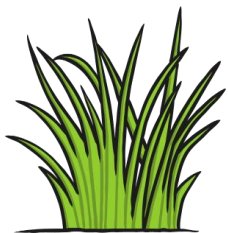
# What Is a Food Chain?

A food chain can tell you about what animals eat.





**What does a cow eat?**



**grass**

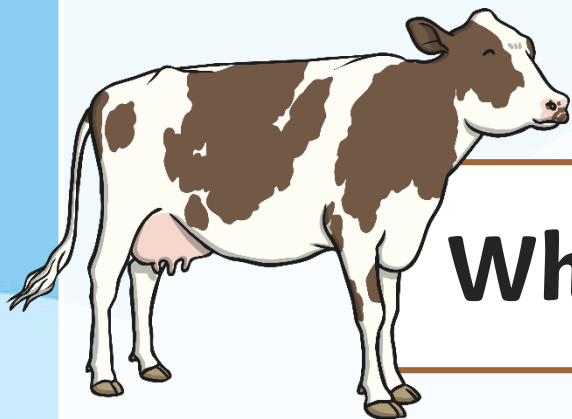


**cereal**

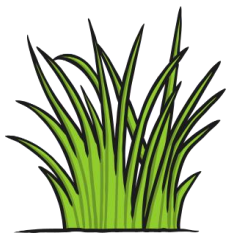


**mice**





**What does a cow eat?**



**grass**

**correct**



**cereal**

**wrong**

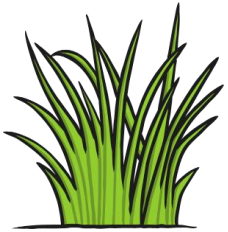


**mice**

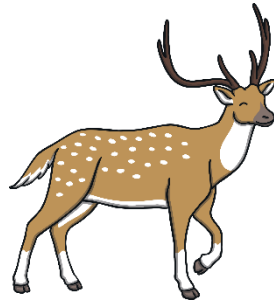
**wrong**



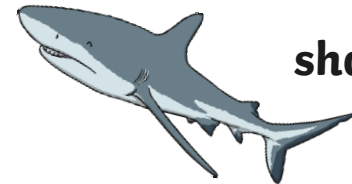
# What does a tiger eat?



grass



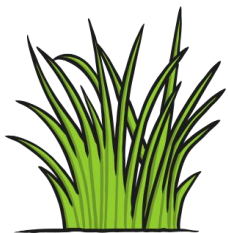
deer



shark

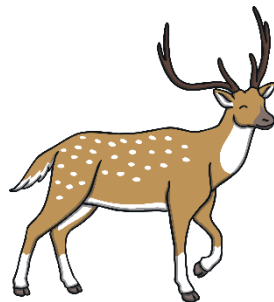


What does a tiger eat?



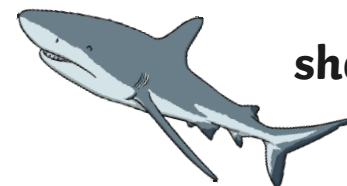
grass

wrong



deer

correct



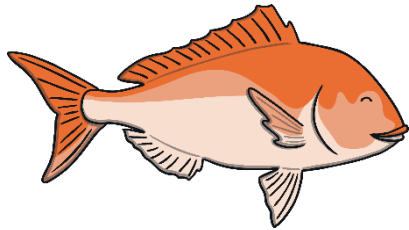
shark

wrong

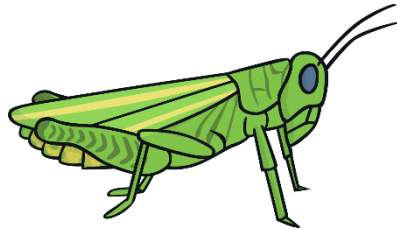




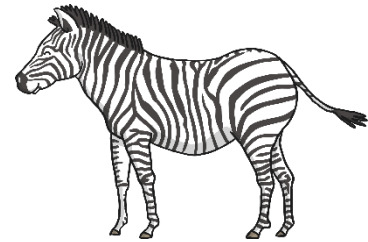
**What does a lion eat?**



**fish**



**grasshopper**

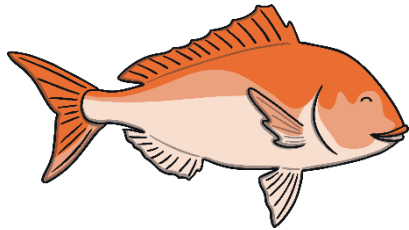


**zebra**



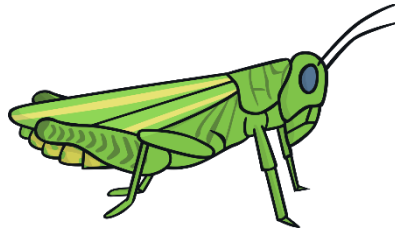


**What does a lion eat?**



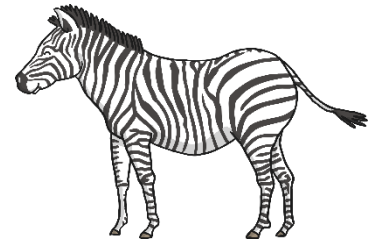
**fish**

**wrong**



**grasshopper**

**wrong**

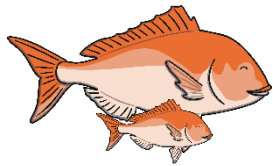
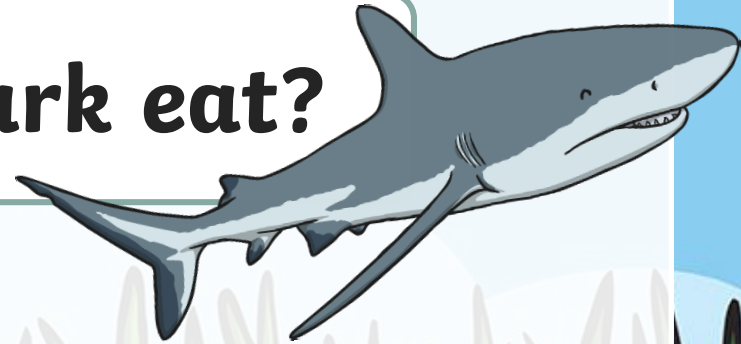


**zebra**

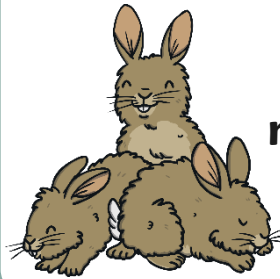
**correct**



# What does a shark eat?



**fish**



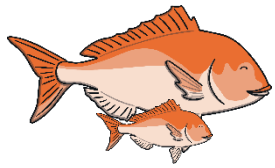
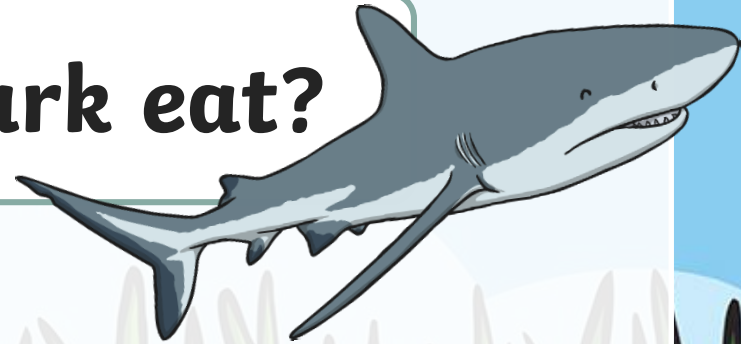
**rabbits**



**grass**

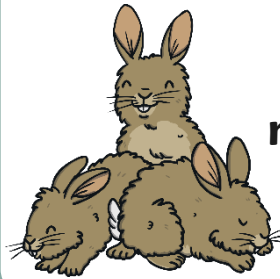


# What does a shark eat?



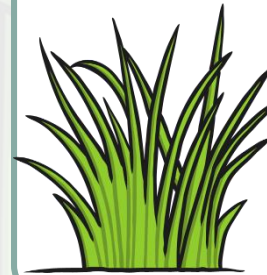
fish

correct



rabbits

wrong



grass

wrong



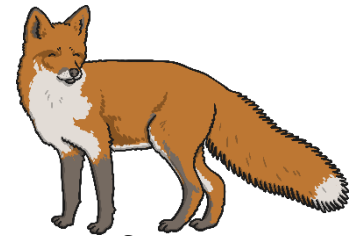
**This is a food chain.**



seeds



shrew



fox



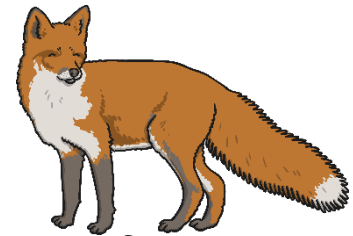
**The arrows show the direction  
the energy is transferred.**



seeds



shrew



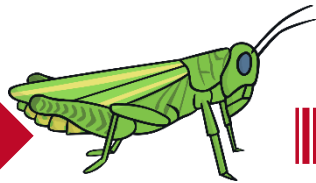
fox



**Which animal is missing from this food chain?**



grass



grasshopper



shrew



?



owl

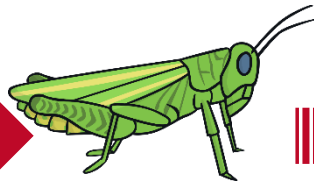
frog



**Which animal is missing from this food chain?**



grass



grasshopper



shrew



owl



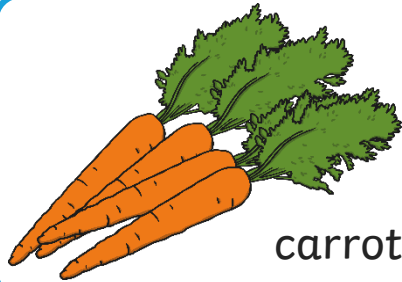
owl



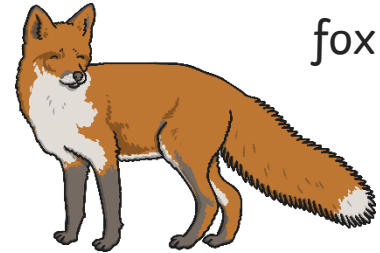
frog



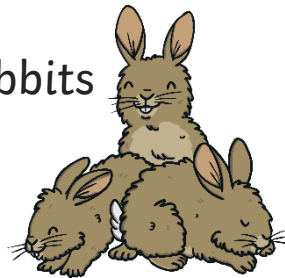
**Which animal is missing from this food chain?**



?



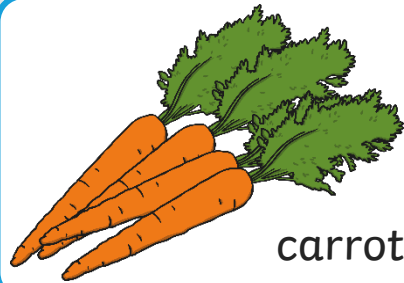
rabbits



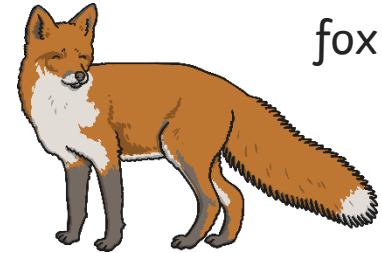
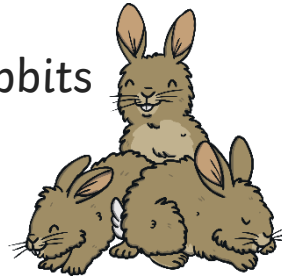
wolf



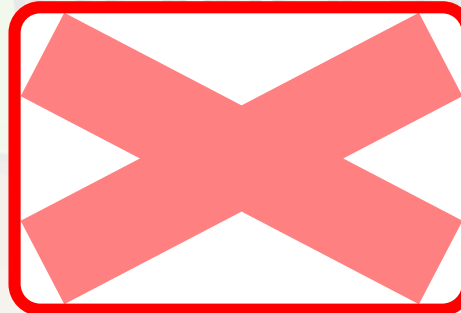
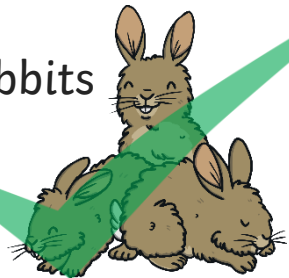
Which animal is missing from this food chain?



rabbits

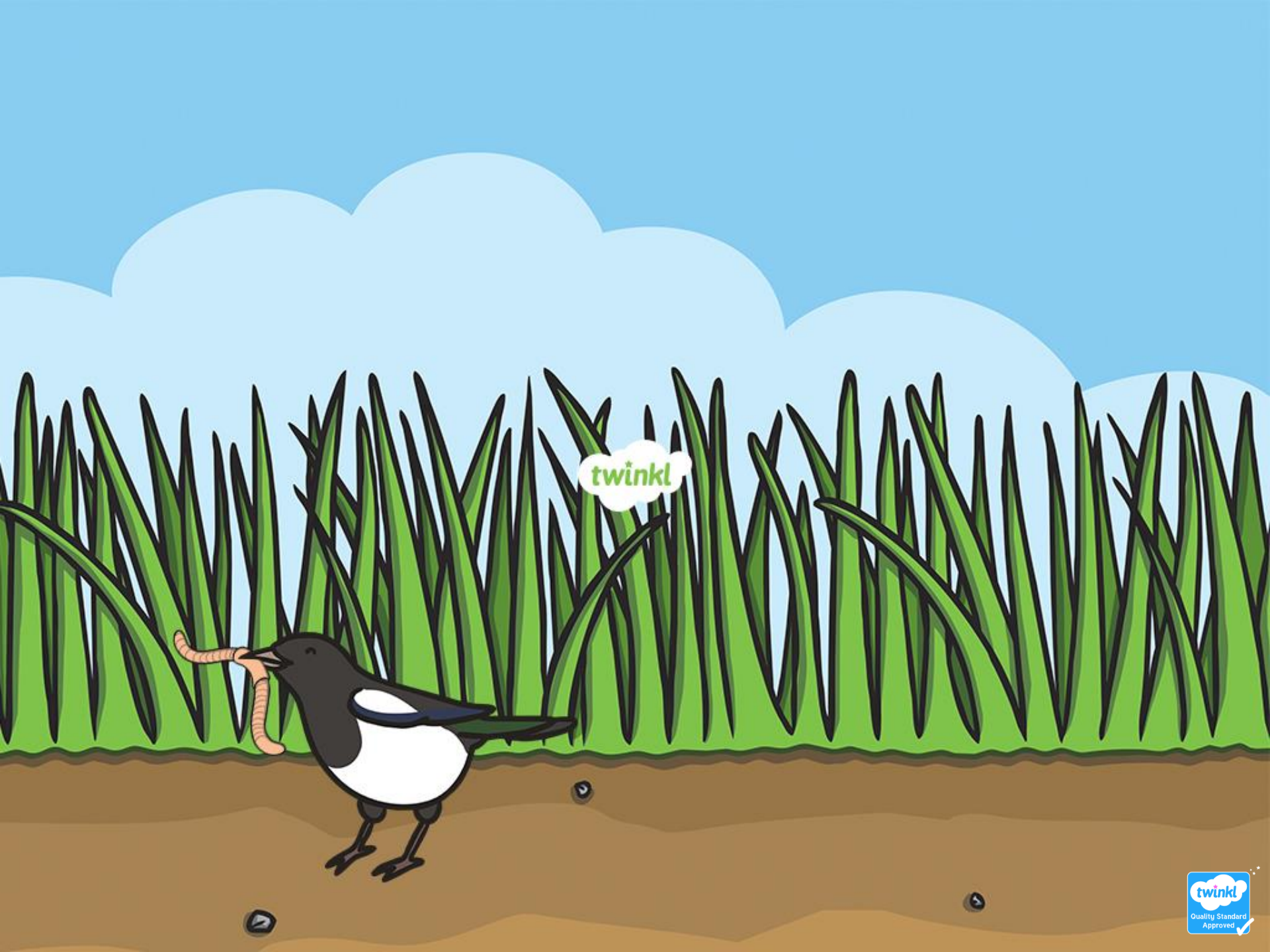


rabbits



**What did you find out about  
food chains?**





twinkl