



Telling the Time

Five-Minute Intervals



At what time do you...



wake up?



go to school?



have your lunch?



go home?



eat dinner?



do your homework?



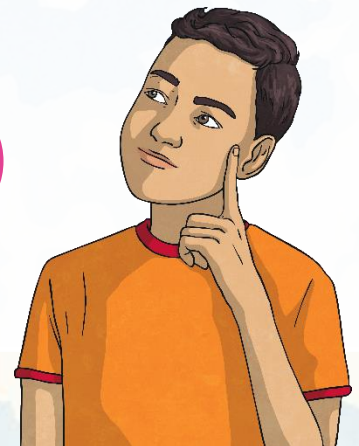
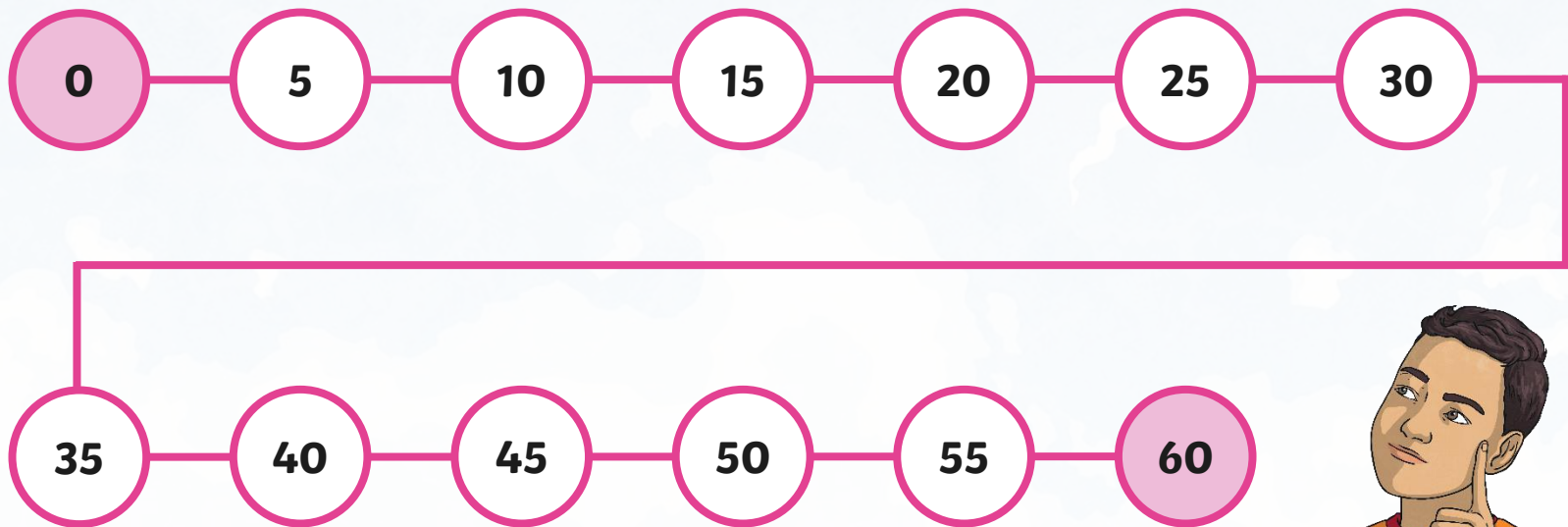
go to bed?



Telling the Time

When we are telling the time, it is really important to be able to count in 5s.

Can you count in 5s from 0 to 60?



Telling the Time

The big hand on the clock counts the minutes and is called **the minute hand**.

We are going to look now at the minutes **past** the hour.

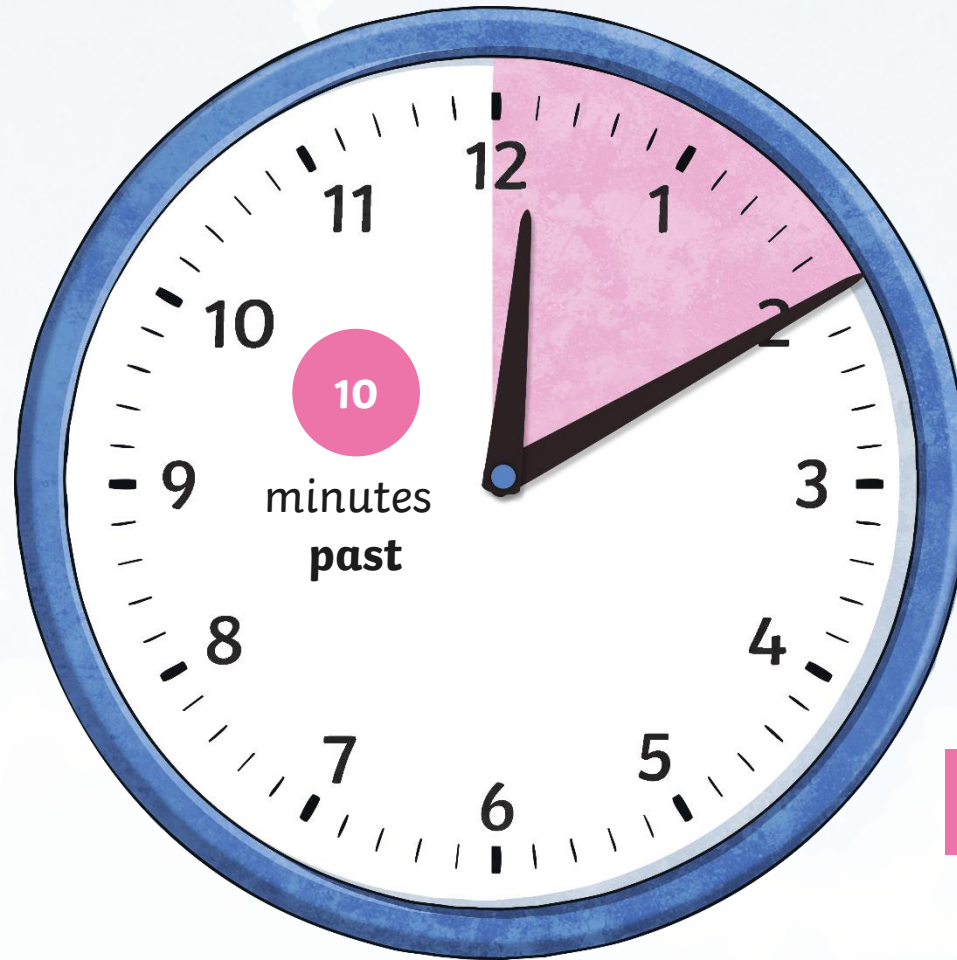


When the big hand points to 1, it means...



This is 5 past....?

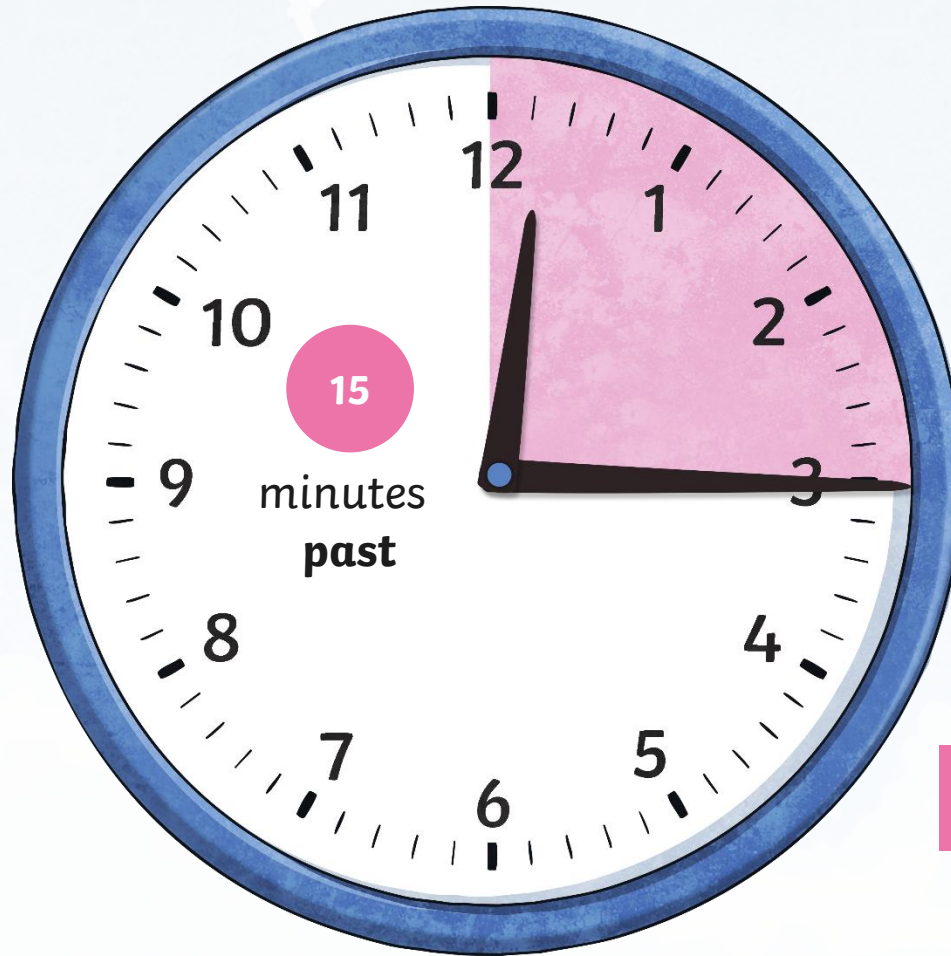
When the big hand points to 2, it means...



This is 10 past ...?



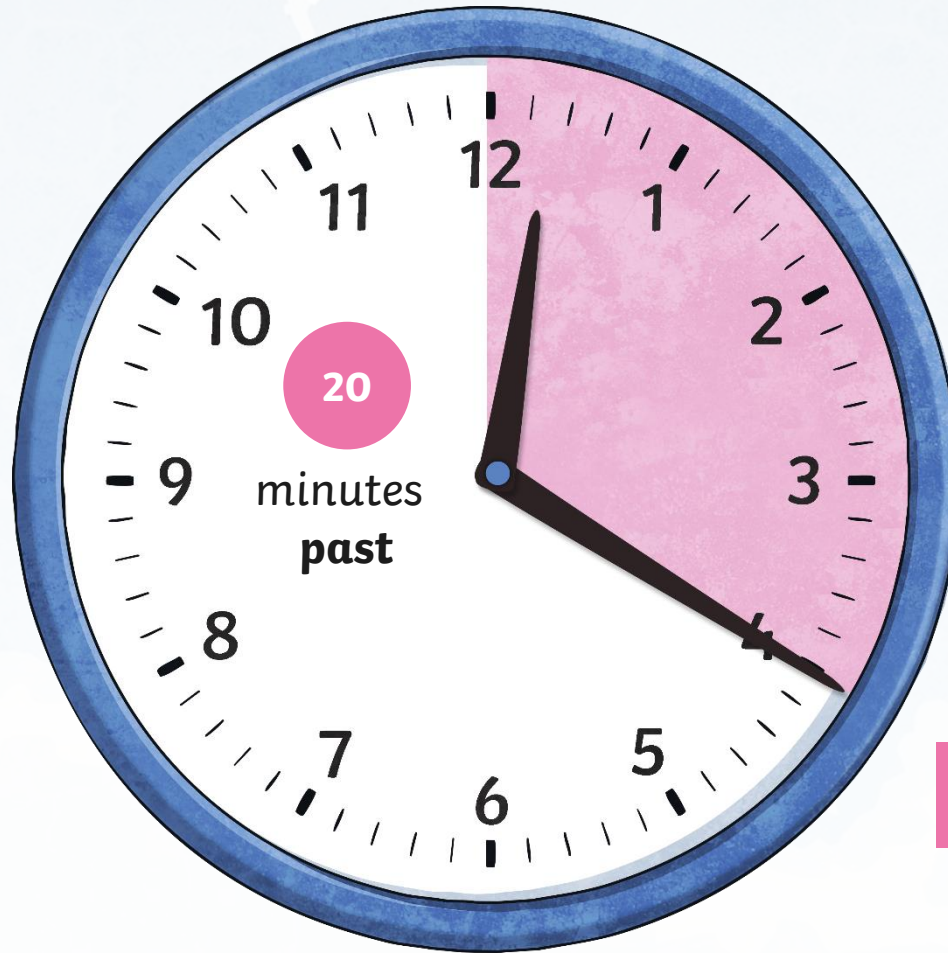
When the big hand points to 3, it means...



This is 15 minutes past....?



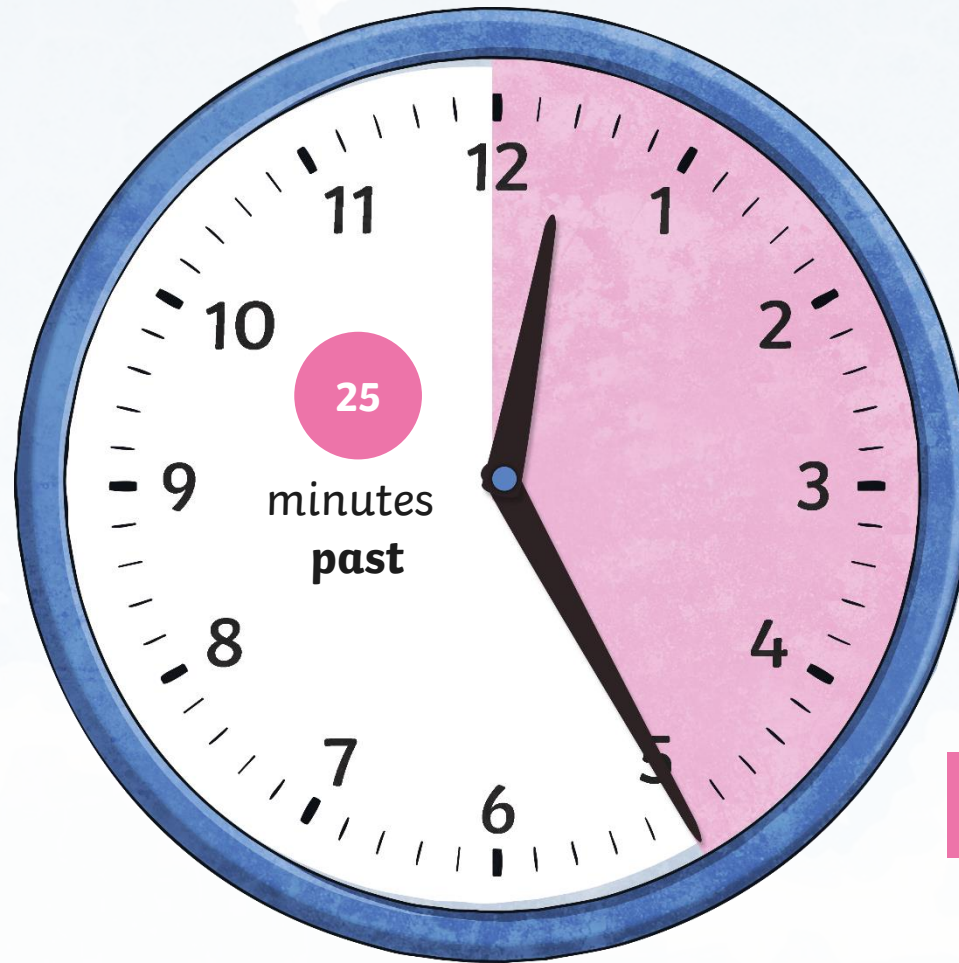
**When the big hand points to 4,
it means...**



This is 20 past....?



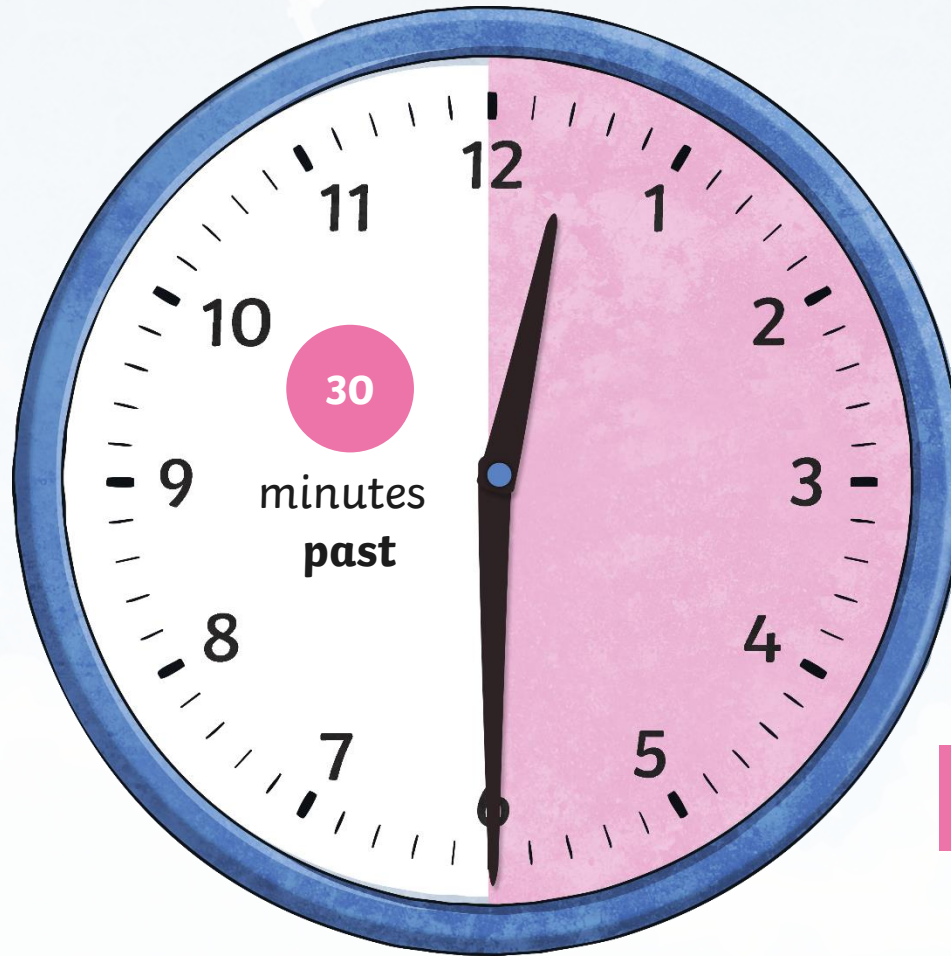
When the big hand points to 5, it means...



This is 25 past....?



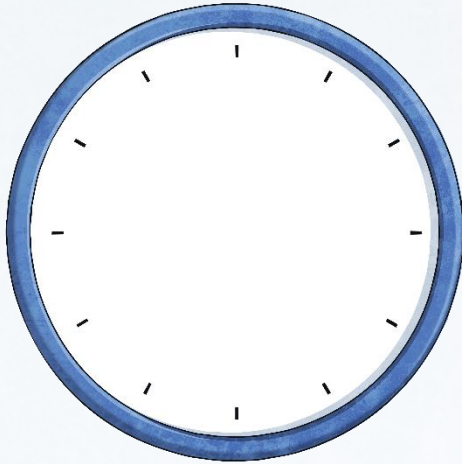
**When the big hand points to 6,
it means...**



This is 30 minutes
past....?



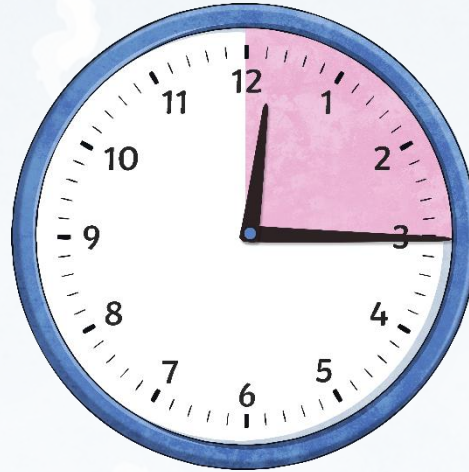
Telling the Time



How many minutes are in an hour?

60 minutes

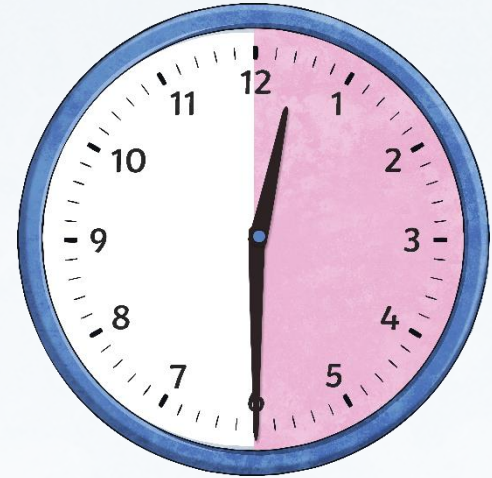
= an hour



Why is 15 minutes called 'quarter past'?

15 minutes

= a quarter of an hour



Why is 30 minutes called 'half past'?

30 minutes

= half an hour

What Time Does it Say on the Clock?



What Time Does it Say on the Clock?



What Time Does it Say on the Clock?



What Time Does it Say on the Clock?



15 minutes past

or

quarter past



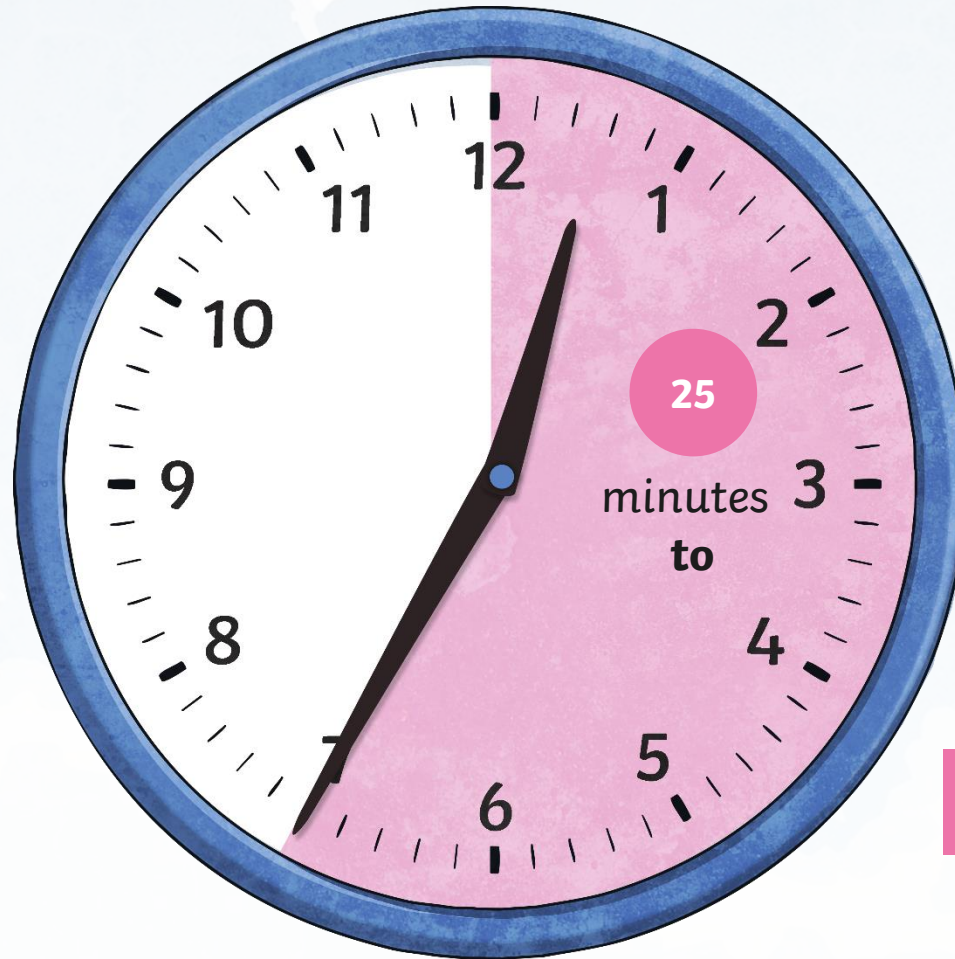
Lesson 2

Telling the Time

Now let's look at the other half of the clock.
We are going to look at the minutes **to** the next hour.



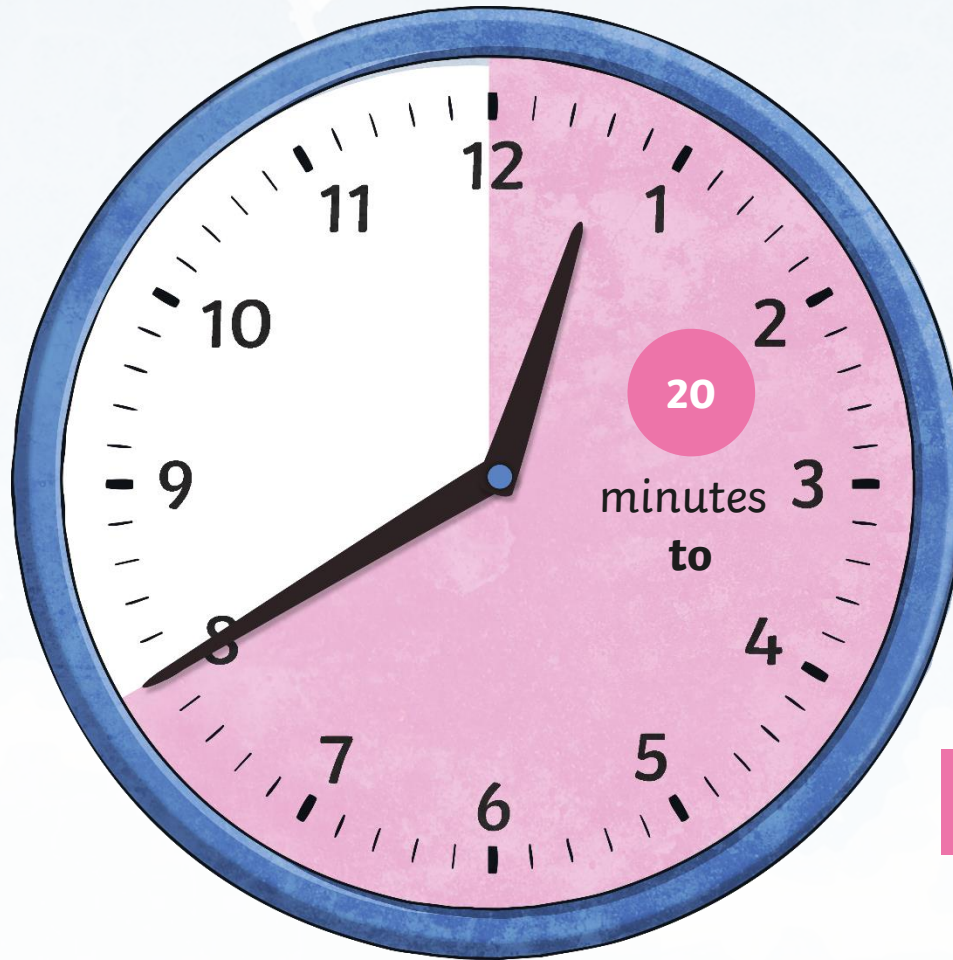
When the big hand points to 7, it means...



25 to



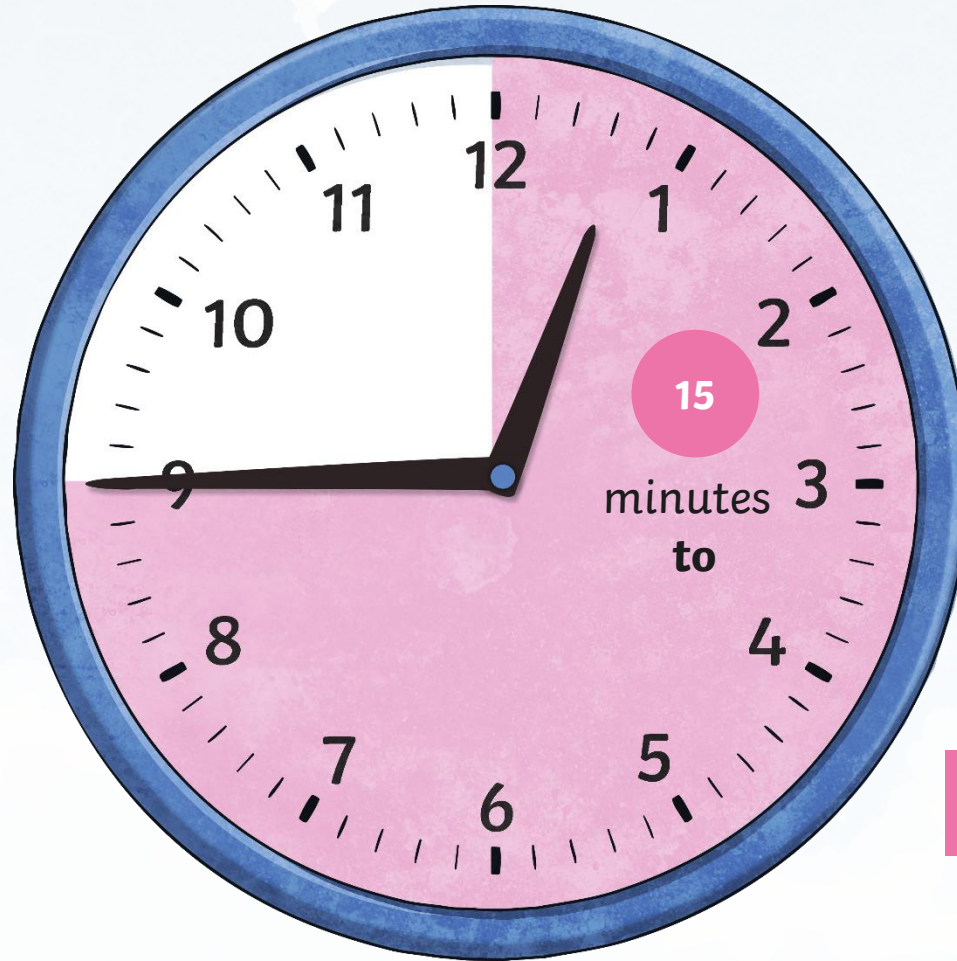
**When the big hand points to 8,
it means...**



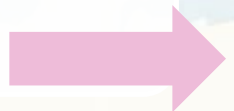
20 to



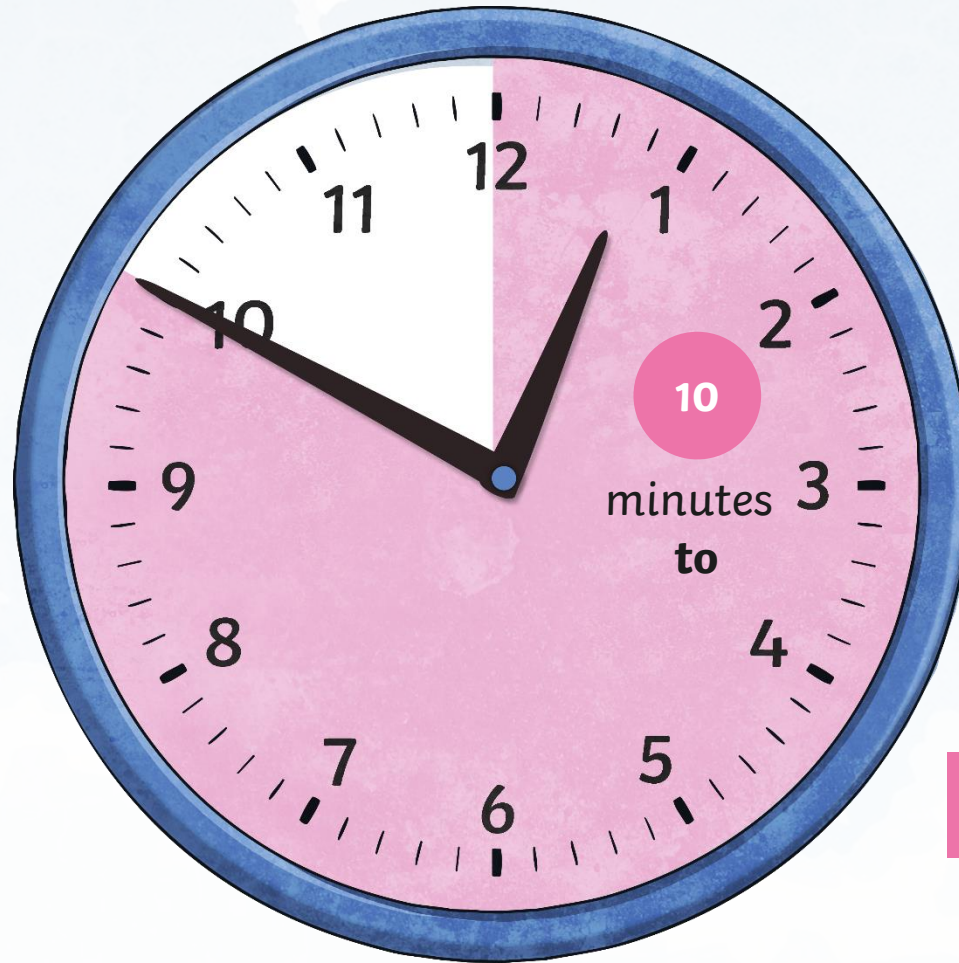
**When the big hand points to 9,
it means...**



15 minutes to...



**When the big hand points to 10,
it means...**



10 to



**When the big hand points to 11,
it means...**



5 to.....



**When the big hand points to 12,
it means...**



_____ o'clock

What Time Does it Say on the Clock?



15 minutes to

or

quarter to



What Time Does it Say on the Clock?



What Time Does it Say on the Clock?



**Look at the clock in your room.
What time is it now?**



